

SHINE . LIKE . NATURE

# 13DESIGNSTUDIO

W O O D E N L I G H T I N G

less is  
more.



[WWW.13DESIGNSTUDIO.COM](http://WWW.13DESIGNSTUDIO.COM)



# ABOUTUS

## ● درباره ما :

استودیو طراحی ۱۳، تولید کننده ی انواع لوسترهای چوبی با هدف طراحی، تولید و عرضه ی انواع کالای چوبی دکوراتیو و روشنایی در سال ۱۳۹۵ تاسیس شد. طراحان صنعتی استودیو طراحی ۱۳ با تکیه بر مهارت، تجربه و هنر خود سعی داشته اند در جهت گسترش فرهنگ صرفه جویی در مصرف انرژی، با تلفیق هنر و صنعت، کالایی با کیفیت، کم مصرف، مبتکرانه، مینیمال و مدرن تولید نمایند. استفاده از چوب گردو به عنوان عنصر طبیعی، این امکان رو فراهم آورد که در فرآیند تولید لوسترها از رنگ های پوششی پرهیز شده تا از نمود بافت و رنگ بکر چوب کاسته نشود. همچنین استفاده از بهترین چیپ های دنیا (cree-bridgelux) در بخش الکترونیک، یکی دیگر از ویژگی های محصولات این گروه می باشد. استودیو طراحی ۱۳ در خلاقانه ترین گام های خود، مصرف کننده را به عنوان طراح نهایی در نظر گرفته و در محصولات خود این امکان را فراهم کرده تا چیدمان چراغ ها بر اساس علاقه ی مصرف کننده و متناسب با فضای مورد نظر صورت گیرد.

## ABOUT US :

13 Design Studio, a producer of all kinds of wooden chandeliers, was established in 2015 with the aim of designing, producing and supplying all kinds of decorative and lighting wooden products.

Relying on their skills, experience and art, the industrial designers of 13 Design Studio have tried to develop a culture of saving energy, by combining art and industry, to produce high-quality, low-consumption, innovative, minimal and modern products.

The use of walnut wood as a natural material made it possible to avoid coating colors in the process of producing chandeliers so as not to diminish the texture and pristine color of the wood.

Also, using the best chips in the world (cree-bridgelux) in the electronics sector is another feature of this group's products.

13 Design Studio, in its most creative steps, considers the consumer as the final designer and provides the possibility in its products to arrange the lights based on the consumer's interest and according to the desired space.



## Catalog list

Andromeda    Pendant    lustre    Sconce

Boxy    Pendant    JOINTY

Eco    JOINTY    Ceiling

Jointy    Pendant    lustre    JOINTY    Sconce

Soyuz    Pendant    lustre    JOINTY    Sconce

Galaxy    Pendant    lustre    JOINTY

RF    Sconce    Ceiling

UFO    Ceiling

### Color coating

Colored and natural



— ANDROMEDA  
BOXY  
ECO  
JOINTY  
SOYUZ  
GALAXY  
RF  
UFO

Pendant  
**Andromeda**  
1361-s



Scan and see  
how the product works



# Andromeda

CODE:1361-S

## ● SPECIFICATIONS

Wattage : 10w  
Luminous Flux : 1200 lm  
Number of lights : 1  
Color temperature : 3000k  
Dimension : R29 H300 mm  
Package type : Cartoon box  
Item package Quantity : 12



## COLOR COATING

Colored and natural



input voltage : 220v-230v  
Driver type : Drive+LED  
module Lumens-per-watt : 120  
LED type : smd  
color index rate : RA>80  
Flicker : Free Flicker  
Light color : Sunny  
coating : Colored vegetable oil & Polyurethane



— ANDROMEDA  
BOXY  
ECO  
JOINTY  
SOYUZ  
GALAXY  
RF  
UFO

Pendant  
**Andromeda**  
1361-L



Scan and see  
how the product works



# Andromeda

CODE:1361-L

## ● SPECIFICATIONS

Wattage : 10w  
Luminous Flux : 1200 lm  
Number of lights : 1  
Color temperature : 3000k  
Dimension : R29 H300 mm  
Package type : Cartoon box  
Item package Quantity : 12



## COLOR COATING

Colored and natural



input voltage : 220v-230v  
Driver type : Drive+LED  
module Lumens-per-watt : 120  
LED type : smd  
color index rate : RA>80  
Flicker : Free Flicker  
Light color : Sunny  
coating : Colored vegetable oil & Polyurethane



— ANDROMEDA  
BOXY  
ECO  
JOINTY  
SOYUZ  
GALAXY  
RF  
UFO



Sconce

# Andromeda 1362



Scan and see  
how the product works



## Andromeda CODE:1362

### ● SPECIFICATIONS

Wattage : 10w  
Luminous Flux : 1200 lm  
Number of lights : 1  
Color temperature : 3000k  
Dimention : R29 H395 mm  
Package type : Cartoon box  
Item package Quantity : 12



### COLOR COATING Colored and natural



input voltage : 220v-230v  
Driver type : Drive+LED  
module Lumens-per-watt : 120  
LED type : smd  
color index rate : RA>80  
Flicker : Free Flicker  
Light color : Sunny  
coating : Colored vegetable oil & Polyurethane



ANDROMEDA  
— BOXY  
ECO  
JOINTY  
SOYUZ  
GALAXY  
RF  
UFO

Pendant  
**Boxy**  
1391



Scan and see  
how the product works



**BOXY**  
CODE:1391

● SPECIFICATIONS

Wattage : 72 w  
Luminous Flux : 8640 lm  
Number of lights : 1  
Color temperature : 3000k  
Dimention : 95\*1014\*88 mm  
Package type : wooden box  
Item package Quantity : 1



**COLOR COATING**

Colored and natural



input voltage : 220v-230v  
Driver type : Drive+LED  
module Lumens-per-watt : 120  
LED type : smd  
color index rate : RA>80  
Flicker : Free Flicker  
Light color : Sunny  
coating : Colored vegetable oil & Polyurethane



ANDROMEDA  
— BOXY  
ECO  
JOINTY  
SOYUZ  
GALAXY  
RF  
UFO

Pendant  
**Boxy**  
1393



Scan and see  
how the product works



# BOXY

CODE:1393

## ● SPECIFICATIONS

Wattage : 36 w  
Luminous Flux : 4320 lm  
Number of lights : 1  
Color temperature : 3000k  
Dimention : 30\*600\*80 mm  
Package type : wooden box  
Item package Quantity : 1



## COLOR COATING

Colored and natural



input voltage : 220v-230v  
Driver type : Drive+LED  
module Lumens-per-watt : 120  
LED type : smd  
color index rate : RA>80  
Flicker : Free Flicker  
Light color : Sunny  
coating : Colored vegetable oil & Polyurethane



ANDROMEDA  
— BOXY  
ECO  
JOINTY  
SOYUZ  
GALAXY  
RF  
UFO

Jointy  
**Boxy**  
1392



Scan and see  
how the product works



## BOXY

CODE:1392

### ● SPECIFICATIONS

Wattage : 36 w  
Luminous Flux : 4320 lm  
Number of lights : 1  
Color temperature : 3000k  
Dimention : 30\*600\*80 mm  
Package type : Cartoon box  
Item package Quantity : 1



### COLOR COATING

Colored and natural



input voltage : 220v-230v  
Driver type : Drive+LED  
module Lumens-per-watt : 120  
LED type : smd  
color index rate : RA>80  
Flicker : Free Flicker  
Light color : Sunny  
coating : Colored vegetable oil & Polyurethane





ANDROMEDA  
BOXY  
— ECO  
JOINTY  
SOYUZ  
GALAXY  
RF  
UFO

Ceiling  
**Eco**  
1301



Scan and see  
how the product works

## ECO

CODE:1301

### ● SPECIFICATIONS

Wattage : 5 w  
Luminous Flux : 600 lm  
Number of lights : 1  
Color temperature : 3000k  
Dimension : 58\*58\*85 mm  
Package type : Cartoon box  
Item package Quantity : 12



### COLOR COATING

Colored and natural



input voltage : 220v-230v  
Driver type : Drive+LED  
module Lumens-per-watt : 120  
LED type : smd  
color index rate : RA>80  
Flicker : Free Flicker  
Light color : Sunny  
coating : Colored vegetable oil & Polyurethane



ANDROMEDA  
BOXY  
— ECO  
JOINTY  
SOYUZ  
GALAXY  
RF  
UFO

Jointy  
**Eco**  
1302



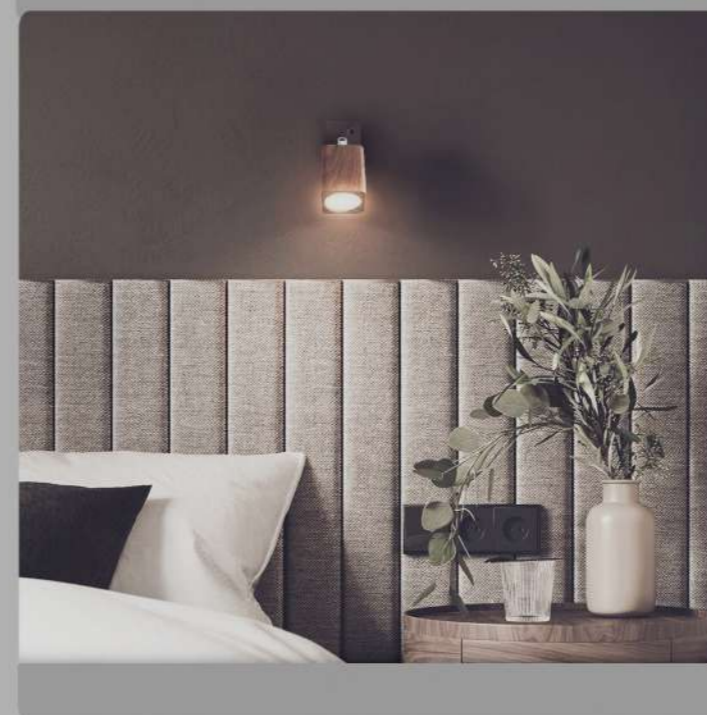
Scan and see  
how the product works



**ECO**  
CODE:1302

● SPECIFICATIONS

Wattage : 5 w  
Luminous Flux : 600 lm  
Number of lights : 1  
Color temperature : 3000k  
Dimention : 58\*58\*145 mm  
Package type : Cartoon box  
Item package Quantity : 12



**COLOR COATING**

Colored and natural



input voltage : 220v-230v  
Driver type : Drive+LED  
module Lumens-per-watt : 120  
LED type : smd  
color index rate : RA>80  
Flicker : Free Flicker  
Light color : Sunny  
coating : Colored vegetable oil & Polyurethane



ANDROMEDA  
BOXY  
— ECO  
JOINTY  
SOYUZ  
GALAXY  
RF  
UFO

Ceiling  
**Eco**  
1303



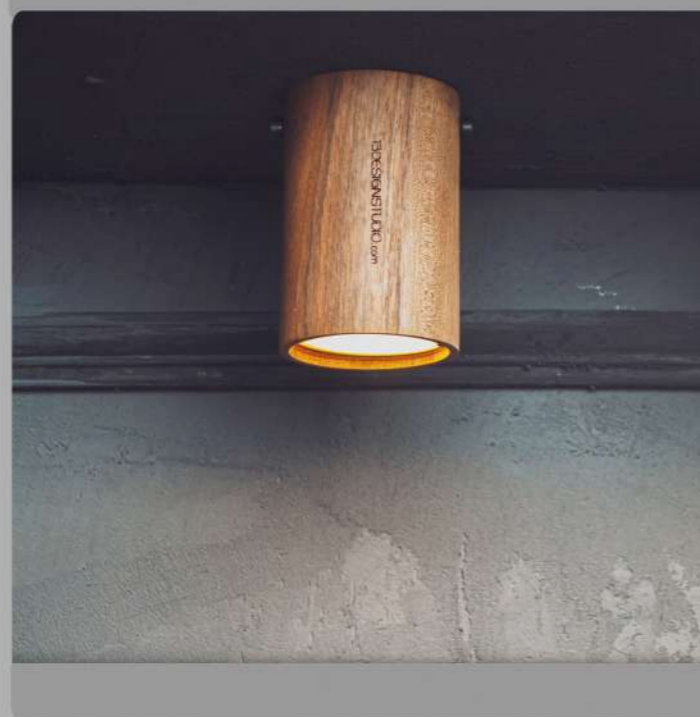
Scan and see  
how the product works



**ECO**  
CODE:1303

● SPECIFICATIONS

Wattage : 5 w  
Luminous Flux : 600 lm  
Number of lights : 1  
Color temperature : 3000k  
Dimention : R29 H85 mm  
Package type : Cartoon box  
Item package Quantity : 12



**COLOR COATING**  
Colored and natural



input voltage : 220v-230v  
Driver type : Drive+LED  
module Lumens-per-watt : 120  
LED type : smd  
color index rate : RA>80  
Flicker : Free Flicker  
Light color : Sunny  
coating : Colored vegetable oil & Polyurethane



ANDROMEDA  
BOXY  
— ECO  
JOINTY  
SOYUZ  
GALAXY  
RF  
UFO

Jointy  
**Eco**  
1304



Scan and see  
how the product works



**ECO**  
CODE:1304

● SPECIFICATIONS

Wattage : 5 w  
Luminous Flux : 600 lm  
Number of lights : 1  
Color temperature : 3000k  
Dimension : R29 H145 mm  
Package type : Cartoon box  
Item package Quantity : 12



**COLOR COATING**

Colored and natural



input voltage : 220v-230v  
Driver type : Drive+LED  
module Lumens-per-watt : 120  
LED type : smd  
color index rate : RA>80  
Flicker : Free Flicker  
Light color : Sunny  
coating : Colored vegetable oil & Polyurethane

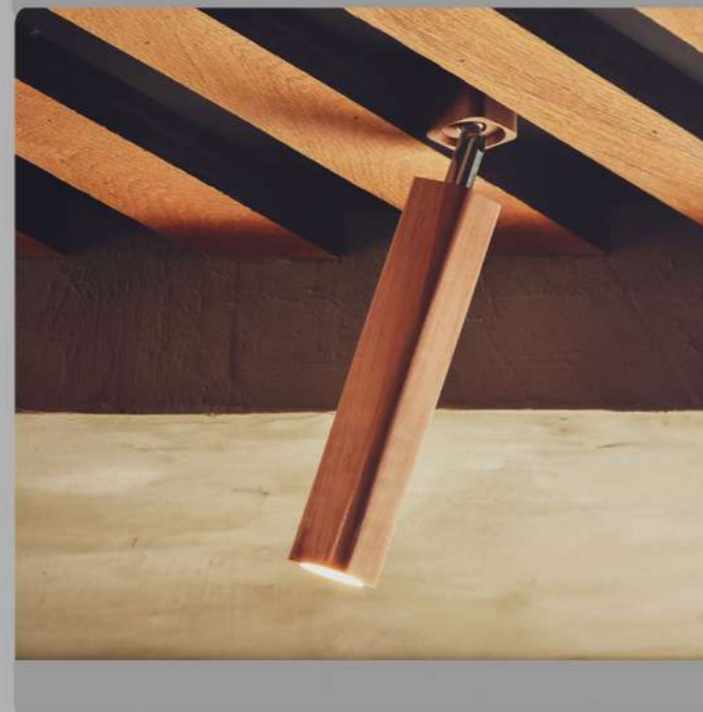


ANDROMEDA  
BOXY  
ECO  
— JOINTY  
SOYUZ  
GALAXY  
RF  
UFO

JOINTY  
**Jointy**  
1321



Scan and see  
how the product works



# JOINTY

CODE:1321

## ● SPECIFICATIONS

Wattage : 5 w  
Luminous Flux : 600 lm  
Number of lights : 1  
Color temperature : 3000k  
Dimension : 42\*42\*210 mm  
Package type : Cartoon box  
Item package Quantity : 12

## COLOR COATING

Colored and natural



input voltage : 220v-230v  
Driver type : Drive+LED  
module Lumens-per-watt : 120  
LED type : smd  
color index rate : RA>80  
Flicker : Free Flicker  
Light color : Sunny  
coating : Colored vegetable oil & Polyurethane



ANDROMEDA  
BOXY  
ECO  
— JOINTY  
SOYUZ  
GALAXY  
RF  
UFO

Sconce  
**Jointy**  
1322



Scan and see  
how the product works

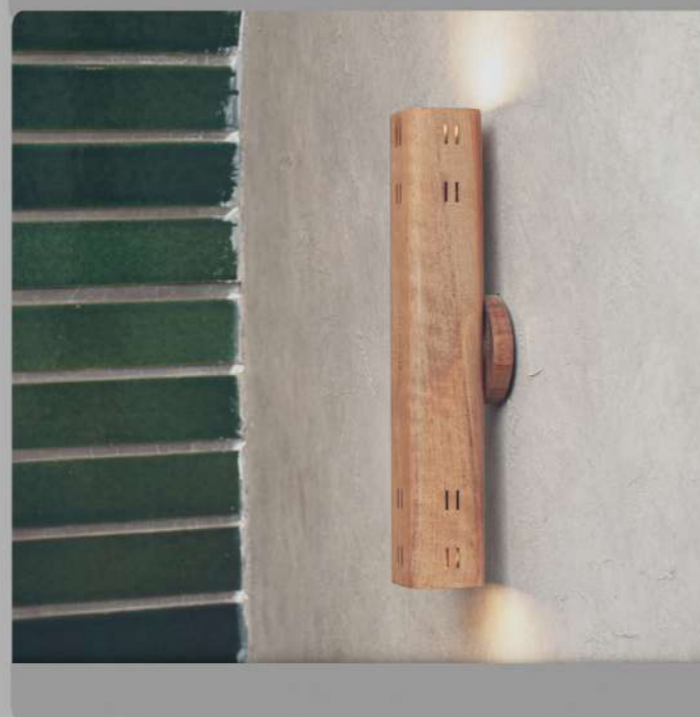


# JOINTY

CODE:1322

## ● SPECIFICATIONS

Wattage : 10w  
Luminous Flux : 1200 lm  
Number of lights : 1  
Color temperature : 3000k  
Dimension : 42\*42\*250 mm  
Package type : Cartoon box  
Item package Quantity : 12



## COLOR COATING

Colored and natural



input voltage : 220v-230v  
Driver type : Drive+LED  
module Lumens-per-watt : 120  
LED type : smd  
color index rate : RA>80  
Flicker : Free Flicker  
Light color : Sunny  
coating : Colored vegetable oil & Polyurethane



ANDROMEDA  
BOXY  
ECO  
— JOINTY  
SOYUZ  
GALAXY  
RF  
UFO

Pendant  
**Jointy**  
1323



Scan and see  
how the product works

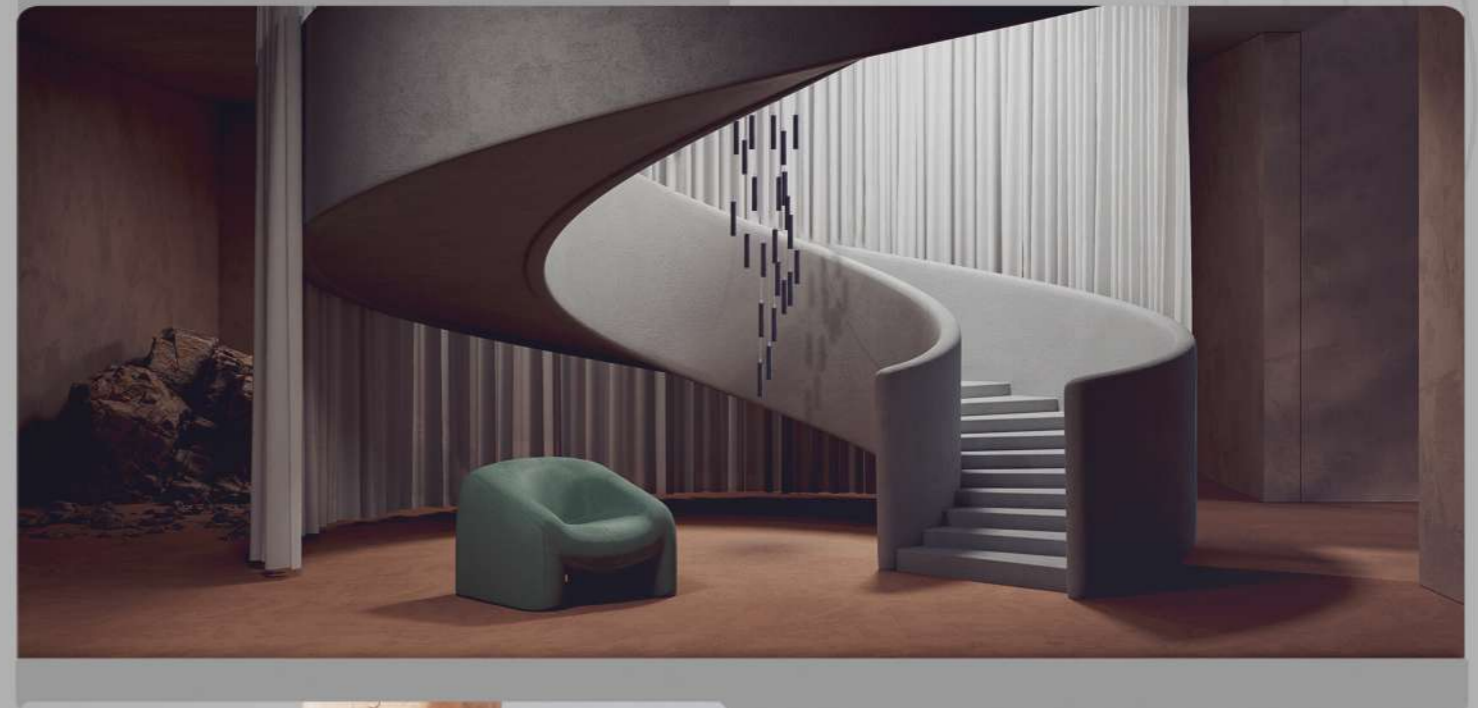


## JOINTY

CODE:1323

### ● SPECIFICATIONS

Wattage : 5 w  
Luminous Flux : 600 lm  
Number of lights : 1  
Color temperature : 3000k  
Dimension : 42\*42\*250 mm  
Package type : Cartoon box  
Item package Quantity : 12



### COLOR COATING

Colored and natural



input voltage : 220v-230v  
Driver type : Drive+LED  
module Lumens-per-watt : 120  
LED type : smd  
color index rate : RA>80  
Flicker : Free Flicker  
Light color : Sunny  
coating : Colored vegetable oil & Polyurethane



ANDROMEDA  
BOXY  
ECO  
JOINTY  
—SOYUZ  
GALAXY  
RF  
UFO

Jointy  
**Soyuz**  
1385



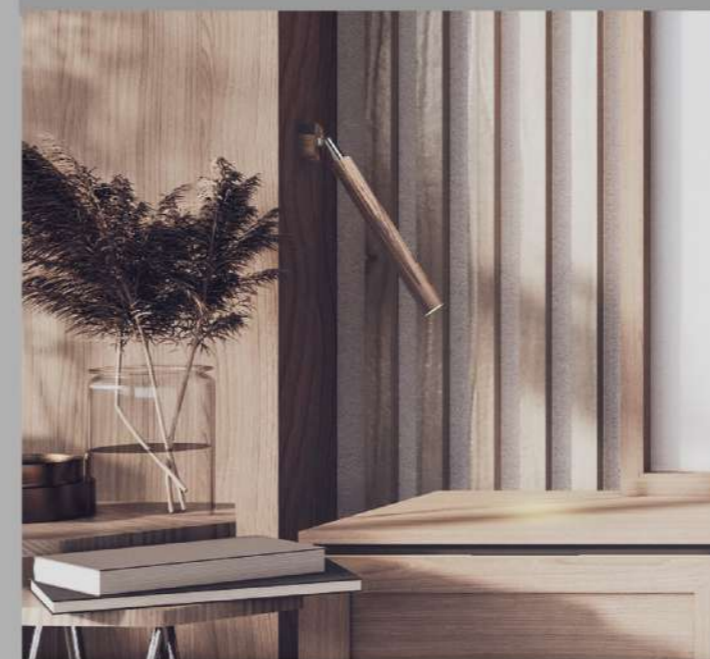
Scan and see  
how the product works



**SOYUZ**  
CODE:1385

● SPECIFICATIONS

Wattage : 1 w  
Luminous Flux : 120 lm  
Number of lights : 1  
Color temperature : 3000k  
Dimention : R13 H260 mm  
Package type : Cartoon box  
Item package Quantity : 12



**COLOR COATING**  
Colored and natural



input voltage : 220v-230v  
Driver type : Drive+LED  
module Lumens-per-watt : 120  
LED type : smd  
color index rate : RA>80  
Flicker : Free Flicker  
Light color : Sunny  
coating : Colored vegetable oil & Polyurethane





ANDROMEDA  
BOXY  
ECO  
JOINTY  
— SOYUZ  
GALAXY  
RF  
UFO

Sconce  
**Soyuz**  
1386



Scan and see  
how the product works



# SOYUZ

CODE:1386

## ● SPECIFICATIONS

Wattage : 2 w  
Luminous Flux : 240 lm  
Number of lights : 2  
Color temperature : 3000k  
Dimension : R13 H400 mm  
Package type : Cartoon box  
Item package Quantity : 12



## COLOR COATING

Colored and natural



input voltage : 220v-230v  
Driver type : Drive+LED  
module Lumens-per-watt : 120  
LED type : smd  
color index rate : RA>80  
Flicker : Free Flicker  
Light color : Sunny  
coating : Colored vegetable oil & Polyurethane



ANDROMEDA  
BOXY  
ECO  
JOINTY  
— SOYUZ  
GALAXY  
RF  
UFO

pendant  
**Soyuz**  
1381



Scan and see  
how the product works



# SOYUZ

CODE:1381

## ● SPECIFICATIONS

Wattage : 10w  
Luminous Flux : 1200 lm  
Number of lights : 1  
Color temperature : 3000k  
Dimension : R29 H300 mm  
Package type : Cartoon box  
Item package Quantity : 12



## COLOR COATING

Colored and natural



input voltage : 220v-230v  
Driver type : Drive+LED  
module Lumens-per-watt : 120  
LED type : smd  
color index rate : RA>80  
Flicker : Free Flicker  
Light color : Sunny  
coating : Colored vegetable oil & Polyurethane



ANDROMEDA  
BOXY  
ECO  
JOINTY  
SOYUZ  
— GALAXY  
RF  
UFO

Pendant  
**Galaxy**  
1377



Scan and see  
how the product works



# GALAXY

CODE:1377

## ● SPECIFICATIONS

Wattage : 36 w  
Luminous Flux : 4320 lm  
Number of lights : 1  
Color temperature : 3000k  
Dimention : 30\*1200\*40 mm  
Package type : wooden box  
Item package Quantity : 1



## COLOR COATING

Colored and natural



input voltage : 220v-230v  
Driver type : Drive+LED  
module Lumens-per-watt : 120  
LED type : smd  
color index rate : RA>80  
Flicker : Free Flicker  
Light color : Sunny  
coating : Colored vegetable oil & Polyurethane





ANDROMEDA  
BOXY  
ECO  
JOINTY  
SOYUZ  
— GALAXY  
RF  
UFO

Pendant  
**Galaxy**  
1372



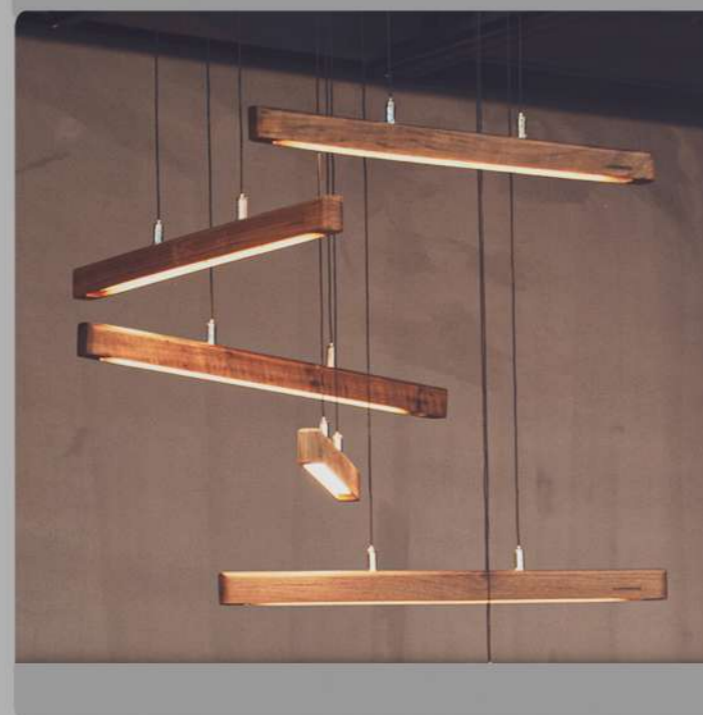
Scan and see  
how the product works



**GALAXY**  
CODE:1372

● SPECIFICATIONS

Wattage : 18 w  
Luminous Flux : 2160 lm  
Number of lights : 1  
Color temperature : 3000k  
Dimension : 30\*600\*40 mm  
Package type : Cartoon box  
Item package Quantity : 12



**COLOR COATING**

Colored and natural



input voltage : 220v-230v  
Driver type : Drive+LED  
module Lumens-per-watt : 120  
LED type : smd  
color index rate : RA>80  
Flicker : Free Flicker  
Light color : Sunny  
coating : Colored vegetable oil & Polyurethane



ANDROMEDA  
BOXY  
ECO  
JOINTY  
SOYUZ  
— GALAXY  
RF  
UFO

Jointy  
**Galaxy**  
1376



Scan and see  
how the product works

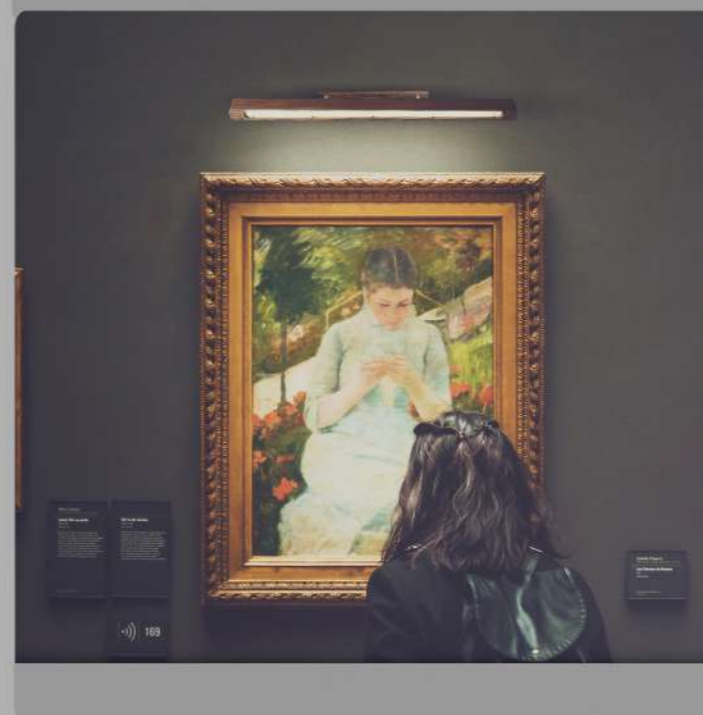


## GALAXY

CODE:1376

### ● SPECIFICATIONS

Wattage : 18 w  
Luminous Flux : 2160 lm  
Number of lights : 1  
Color temperature : 3000k  
Dimention : 30\*600\*40 mm  
Package type : Cartoon box  
Item package Quantity : 12



### COLOR COATING

Colored and natural



input voltage : 220v-230v  
Driver type : Drive+LED  
module Lumens-per-watt : 120  
LED type : smd  
color index rate : RA>80  
Flicker : Free Flicker  
Light color : Sunny  
coating : Colored vegetable oil & Polyurethane



ANDROMEDA  
BOXY  
ECO  
JOINTY  
SOYUZ  
GALAXY  
— RF  
UFO

Sconce  
**RF**  
1333



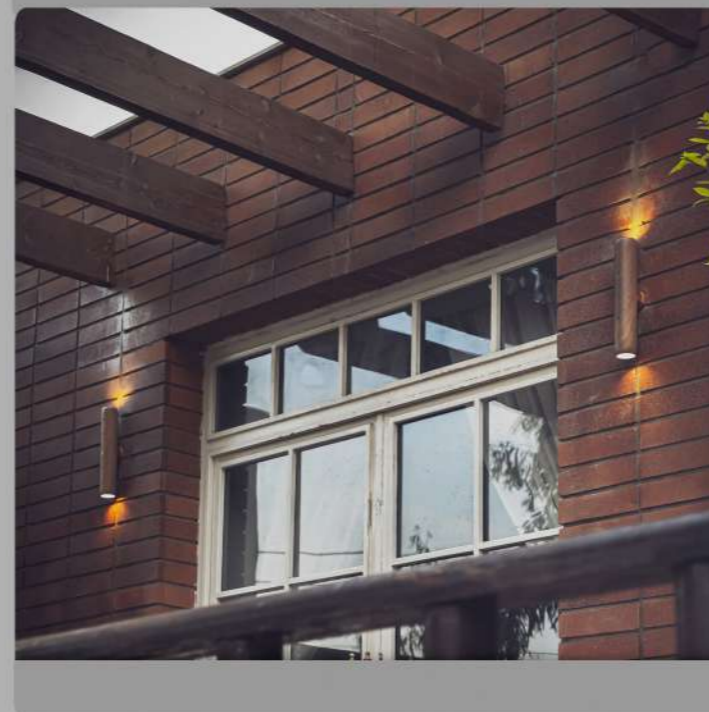
Scan and see  
how the product works



**RF**  
CODE:1333

● SPECIFICATIONS

Wattage : 10w  
Luminous Flux : 1200 lm  
Number of lights : 1  
Color temperature : 3000k  
Dimention : R29 H320 mm  
Package type : Cartoon box  
Item package Quantity : 12



**COLOR COATING**  
Colored and natural



input voltage : 220v-230v  
Driver type : Drive+LED  
module Lumens-per-watt : 120  
LED type : smd  
color index rate : RA>80  
Flicker : Free Flicker  
Light color : Sunny  
coating : Colored vegetable oil & Polyurethane



ANDROMEDA  
BOXY  
ECO  
JOINTY  
SOYUZ  
GALAXY  
RF  
UFO

Ceiling  
**RF**  
1331



Scan and see  
how the product works



**RF**  
CODE:1331

● SPECIFICATIONS

Wattage : 10 w  
Luminous Flux : 1200 lm  
Number of lights : 1  
Color temperature : 3000k  
Dimention : R29 H310 mm  
Package type : Cartoon box  
Item package Quantity : 12



**COLOR COATING**  
Colored and natural



input voltage : 220v-230v  
Driver type : Drive+LED  
module Lumens-per-watt : 120  
LED type : smd  
color index rate : RA>80  
Flicker : Free Flicker  
Light color : Sunny  
coating : Colored vegetable oil & Polyurethane



ANDROMEDA  
BOXY  
ECO  
JOINTY  
SOYUZ  
GALAXY  
RF  
— UFO



Ceiling  
**UFO**  
1340



Scan and see  
how the product works



## UFO

CODE:1340

### ● SPECIFICATIONS

Wattage : 23 w  
Luminous Flux : 2000 lm  
Number of lights : 1  
Color temperature : 4000k  
Dimention : R12.5 H50 mm  
Package type : Cartoon box  
Item package Quantity : 12



### COLOR COATING

Colored and natural



input voltage : 220v-230v  
Driver type : Drive+LED  
module Lumens-per-watt : 120  
LED type : smd  
color index rate : RA>80  
Flicker : Free Flicker  
Light color : Sunny  
coating : Colored vegetable oil & Polyurethane







# LEGO

LIGHTING  
BY 13DESIGNSTUDIO



## pendant LEGO

Linear light product with LEGO brand - made of different wood than Studio 13 products and with pastel colors for a more beautiful design of your living environment.

[Read More](#)



## LEGO CODE:1310

### ● SPECIFICATIONS

- Wattage : 30 w
- Luminous Flux : 2000 lm
- Number of lights : 1
- Color temperature : 4000k
- Dimension : 102\*7\*5 cm
- Package type : Foam box
- Item package Quantity : 1



### COLOR COATING

Colored and natural



COLOR BOX  
10 NUMBERS

- input voltage : 220v-230v
- Driver type : Drive+LED
- module Lumens-per-watt : 120
- LED type : smd
- color index rate : RA>80
- Light color : Natural
- coating : Colored vegetable oil & Polyurethane





13designstudio\_official  
Instagram Id

CON  
TACT  
US.

[www.13designstudio.com](http://www.13designstudio.com)  
[INFO@13DESIGNSTUDIO.COM](mailto:INFO@13DESIGNSTUDIO.COM)

TELL: ( IR +98 ) 021 - 9130 80 89  
ADDRESS: 17ALLEY COLESTAN ST-QOM-IRAN